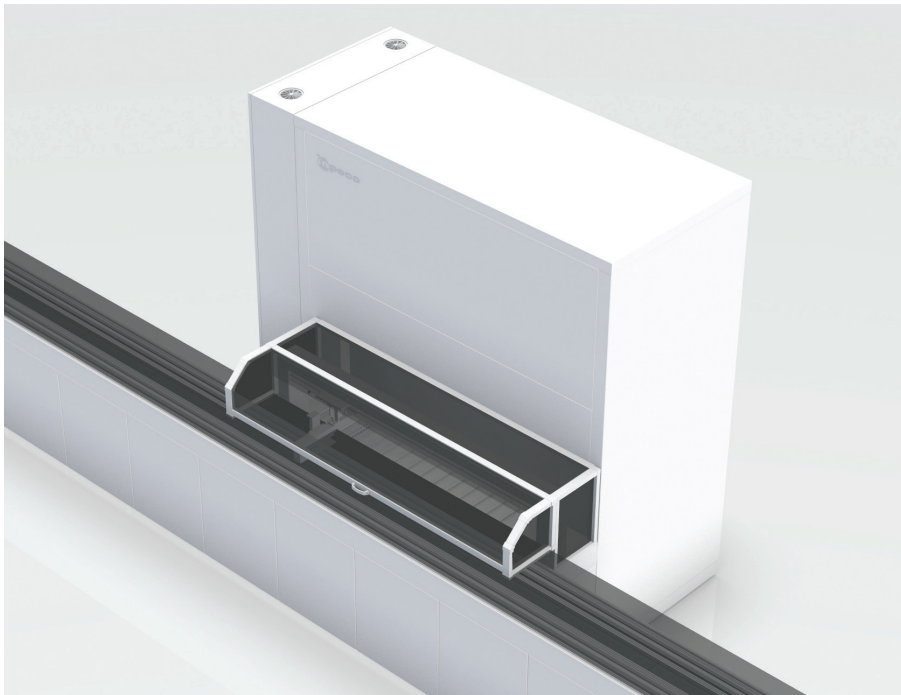


Storage and Retrieval Module (SRM)

Technical Data Sheet

The Storage and Retrieval Module stores sample tubes from the automation system in a temperature controlled and protected environment. It consists of a storage worktable and an automatic refrigerator. When stored, a sample tube can be retrieved based on a Host LIS, middleware, or user request. In this case, the rack containing the requested sample tube is retrieved from the storage worktable and the tube is loaded onto the tube carrier at the loading position on track. After a predefined, configurable time interval, the sample tubes are discarded into the waste container located in the waste area nearby the SRM.

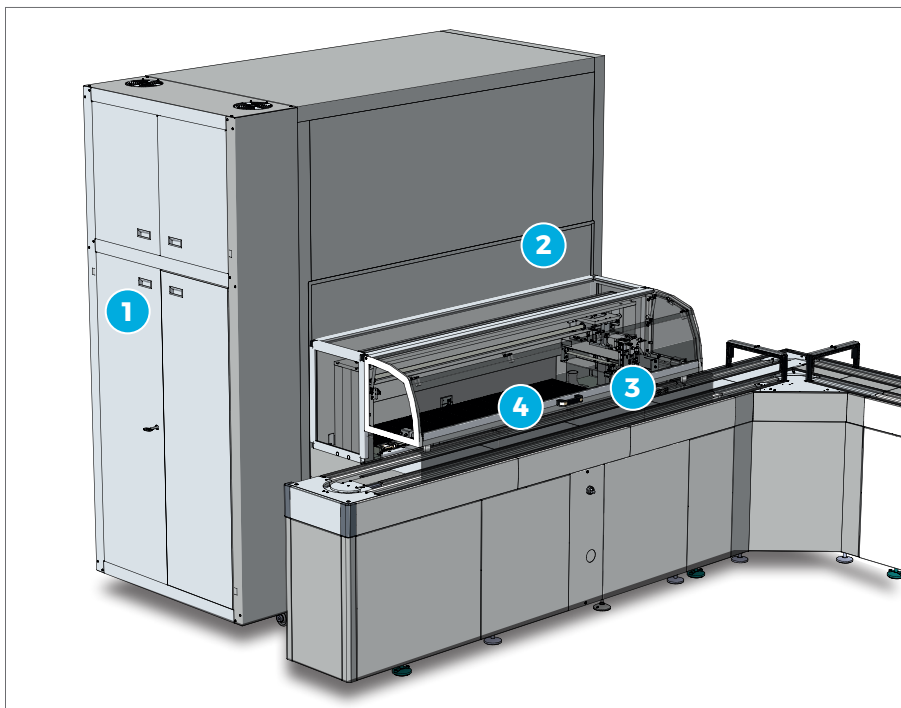


Benefits

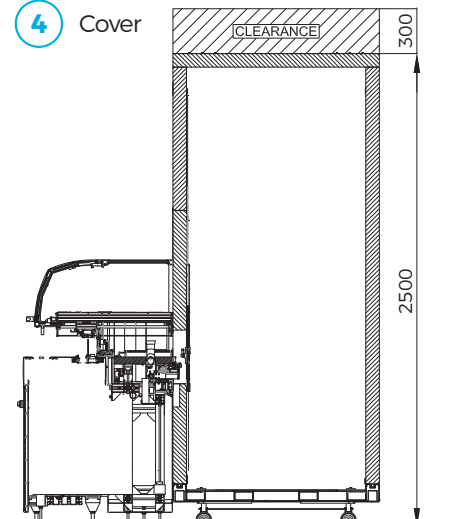
- > Completely traceable sample storage under temperature-controlled conditions
- > Automatic storing and time-configurable discarding of sample tubes
- > Modules of different sizes to match differing workload and space requirements

Applications

- > Storing of samples for backup and further analysis
- > Storing of samples for possible reruns



- 1 Cabinet
- 2 Automatic Refrigerator
- 3 Robot
- 4 Cover



Main Features

Throughput	Up to 800 tubes/h (loading/unloading)
Walk-away capacity	1000 tubes (Waste capacity)
Tube specifications	
Sample type	All (Spun and Unspun)
Cap type	Capped and Sealed
Dimensions (mm)	13x75, 13x100, 16x75, 16x100
Position along the automation	In Post-analytical Area, after all analyzers and before Input area

Declared values are indicative of maximum performance obtained in optimized and standardized processing conditions, as tested by Inpeco. Historical field values should be used for system sizing and layout definition

Other Features

- > The SRM worktable is configured with 16 lanes to accommodate 48-tube-location racks, uniquely identified by a Barcode ID
- > A sample rack Barcode Reader allows sample rack identification before rack processing
- > A Rack Robot moves sample racks from the SRM Table to the automated refrigerator shelves and vice-versa
- > The Automated Refrigerator shall allow to store sample tubes at a temperature of 4°C with a -2°C and +4°C tolerance.
- > The Automated Refrigerator shall have a device to monitor temperature.
- > If the SRM temperature check is disabled, the customer can store samples at "Room Temperature"
- > The SRM has an independent PC provided with a database to store sample tubes information
- > The SRM has one user-accessible disposal location to dispose sample tubes
- > The SRM can have one lamp with red light during waste bin movement if Multi-Waste bins is installed
- > The SRM is available in two configurations of different size: 20 floors (15.360 sample tubes) or 12 floors (9.216 sample tubes)

Technical Specifications

Dimensions (LxHxD) (mm)

Main clearances (left x right x front) (mm)

Weight - only module (Kg)

Weight - including racks and tubes*(Kg)

Compressed air (NL/min)

Power inlet point

Maximum continuous current (A)

Maximum alternate current (A)

Real power consumption (W)

Heat (BTU/h)

9000

2450x2200x1450

1000x710x600, additional service clearances of 1100 behind the refrigerator room and of 300 from SRM maximum height to the ceiling

990

1246Kg

9.53(Standard)
7.32 (HT)

230 Vac

/

16

2944

10009.6

15000

2450x2500x1450

1000x710x600, additional service clearances of 1100 behind the refrigerator room and of 300 from SRM maximum height to the ceiling

1355

1782Kg

9.53(Standard)
7.32 (HT)

230 Vac

/

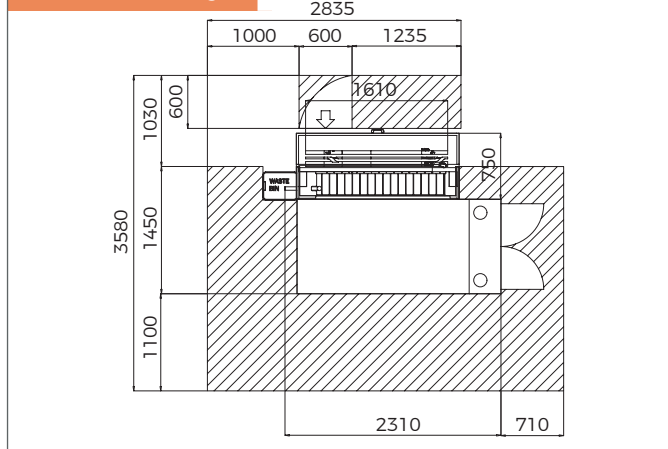
16

2944

10009.6

* The SRM weight has been defined by hypotising the module filled only with fully filled 16x100 tubes.

Technical Drawing



Module dimensions and clearances expressed in mm.

Ordinary Maintenance

Operator¹

/

Service²

Every 90-180 days, according to operations

¹ According to Operation Manual. ²The periodicity depends also on the routine tubes/day. For more details refer to Service Manual.

Part Numbers

	FlexLab Standard	FlexLab HT
Main module	FLX-507-02	FLX-507-11
Configuration		
9000	FLX-230-02	FLX-230-11
15000	FLX-207-02	FLX-207-11
Multi-Waste	N.A.	N.A.

N.A. = Not Available.

Inpeco SA

Via Torraccia 26
6883 Novazzano
Switzerland
inpeco.com



reference code: SSF-SRM 23.07
version n°: EN06