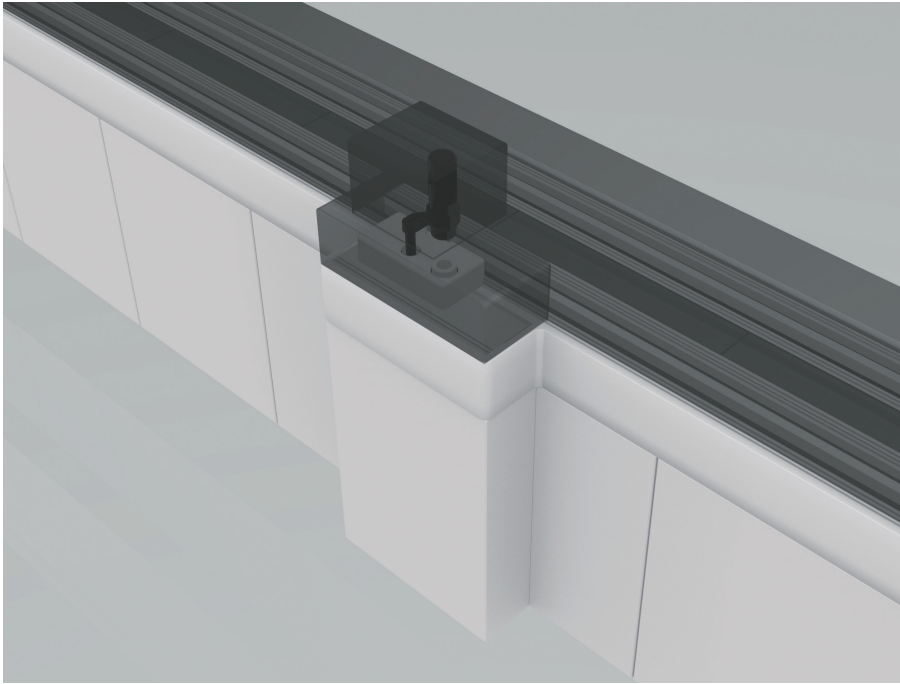


Decapper Module (DCM) Technical Data Sheet

The Decapper Module automates removal of both screw and pressure plastic closures from sample tubes, processing simultaneously different tube types and sizes. The cap is removed and discarded into the Decapper waste container.

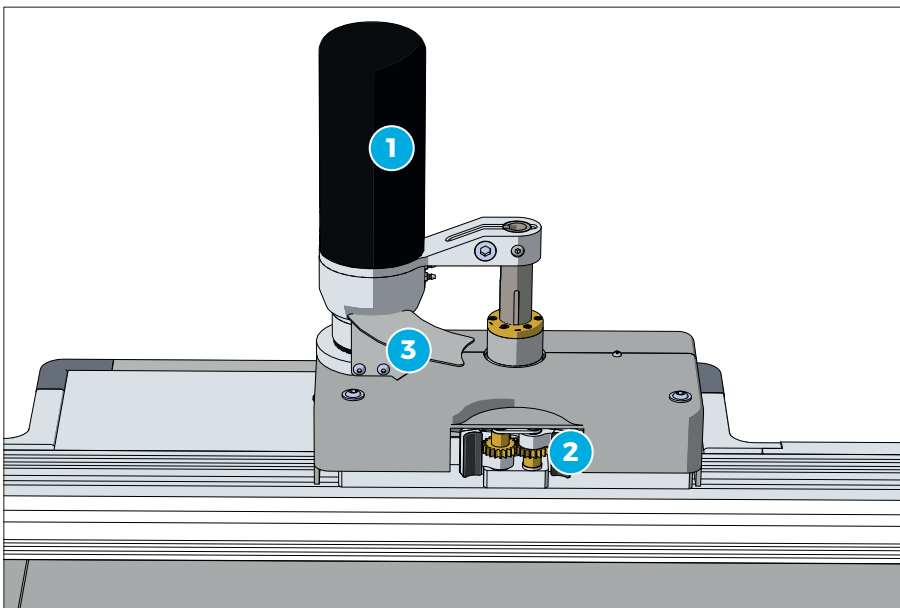


Benefits

- > Improvement of operator safety by avoiding manual uncapping of the sample
- > Reduction of dangerous and dirty tasks from Operator's activities

Applications

- > Uncapping of sample tubes before analysis



- 1 Decapper Head
- 2 Gripper Pads
- 3 Drip Tray

Main Features

Throughput	Up to 800 tubes/h
Walk-away capacity	2000 tubes
Tube specifications	
Sample type	Spun
Cap type	Capped
Dimensions (mm)	13x75, 13x100, 16x75, 16x100
Position along the automation	Pre-Analytical Area

The maximum throughput calculations are obtained in optimized and standardized conditions, as tested by Inpeco.

Other Features

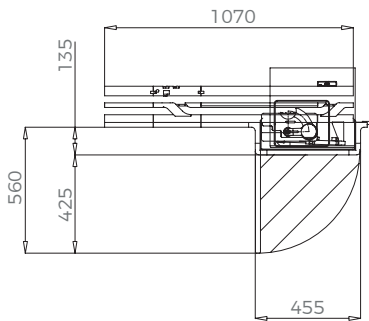
- > DCM has a tube gripper to hold sample tubes at Decap Gate during decapping process
- > The cap is removed from sample tube and Decapper Head discards it into DCM waste container
- > DCM waste container contains a minimum of 2000 caps

Technical Specifications

Dimensions (LxHxD) (mm)	455x1240x135
Main clearances (left x right x front) (mm)	0x0x425
Weight (Kg)	30
Compressed air (NL/min)	14.52 (Standard) 13.04 (HT)
Power inlet point	24 Vdc

Maximum continuous current (A)	7.5
Maximum alternate current (A)	/
Total power consumption (W)	180
Heat (BTU/h)	489.6

Technical Drawing



Module dimensions and clearances expressed in mm.

Ordinary Maintenance

Operator ¹	/
Service ²	Every 90-180 days, according to operations

¹ According to Operation Manual. ²The periodicity depends also on the routine tubes/day. For more details refer to Service Manual.

Part Numbers	FlexLab™	FlexLab™ for High Throughput
Main module	FLX-203-01	FLX-203-11
Slot	FLX-503-01	FLX-503-11

Inpeco SA
Via Torraccia 26
6883 Novazzano
Switzerland
inpeco.com



reference code: SSF-DCM 23.03
version n°: EN04